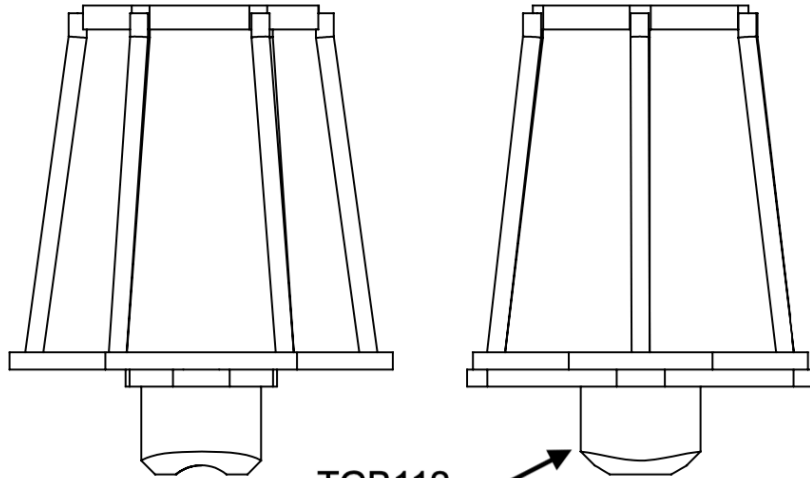
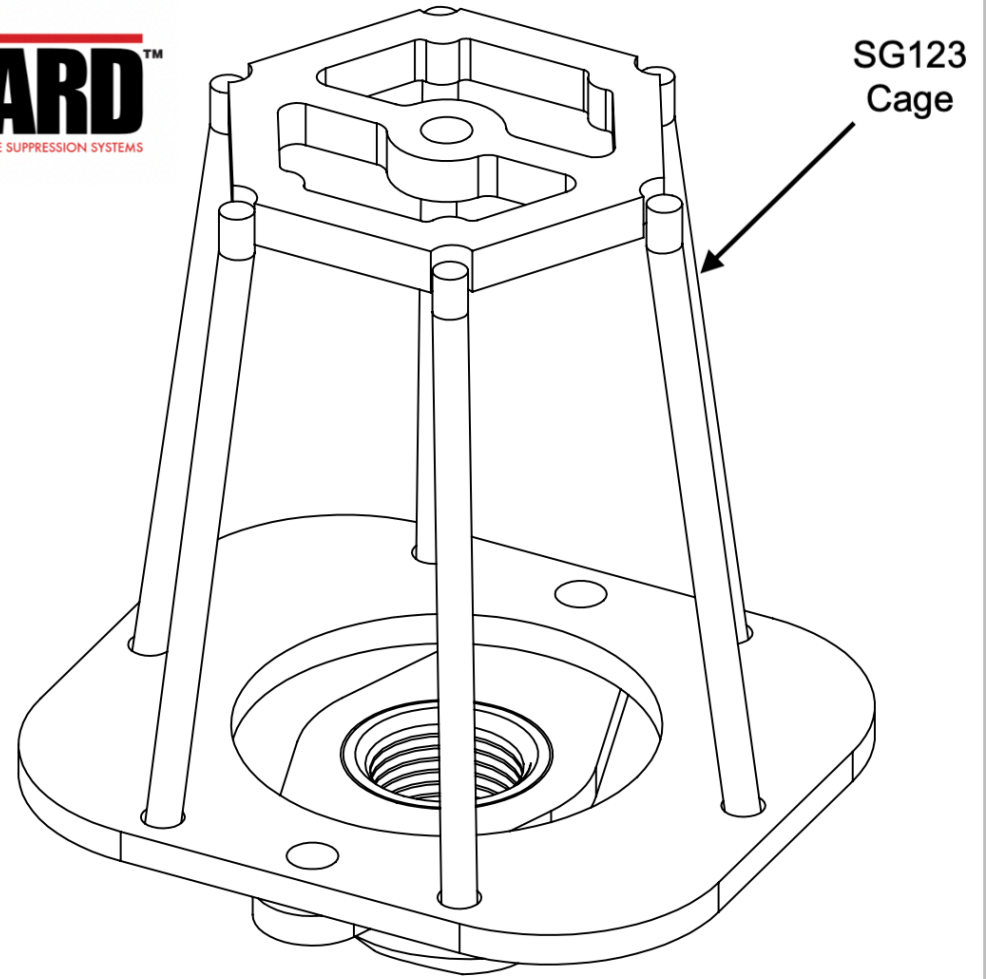
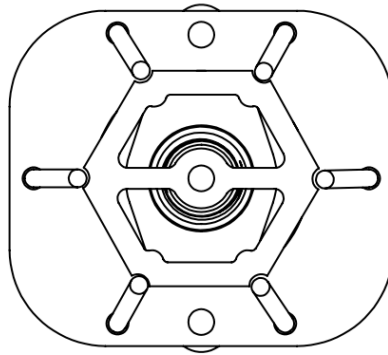


2

1



TGB112
Base plate

WG012 WeldGUARD

The WeldGUARD is one of SprinkGUARDS two options for new construction. It is available in (2) different baseplate sizes 1/2" & 3/4". The WeldGUARD base plates are welded to the supply line during the fire sprinkler system fabrication process. Both the WG012 (1/2") and WG034 (3/4") base plates use the same SG123 Cage show in these images. Once the system has been installed the SG123 Cage is then bolted to the base plate, and can be easily removed for system maintenance.

Note: If you have new construction ESFR heads that need protected please refer to our TG520 (ESFR ThreadGUARD) or WG520 (ESFR WeldGUARD)

www.sprinkguard.com info@sprinkguard.com 877-274-7976

Copyright 2023

2

1

B

B

A

A

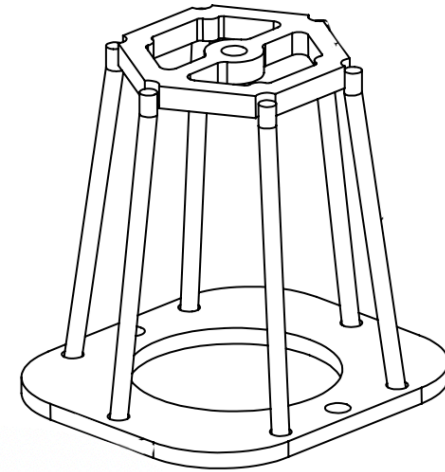
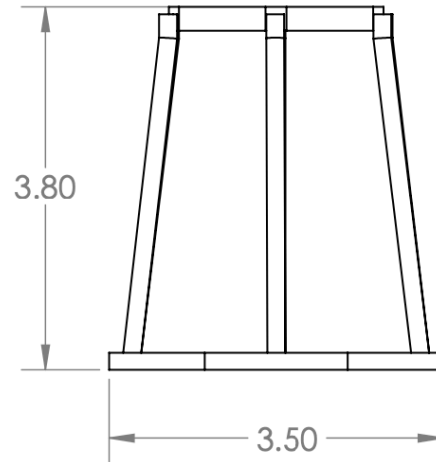
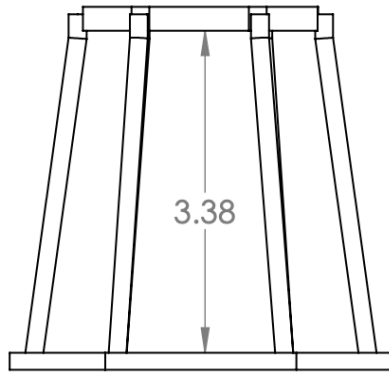
2

1



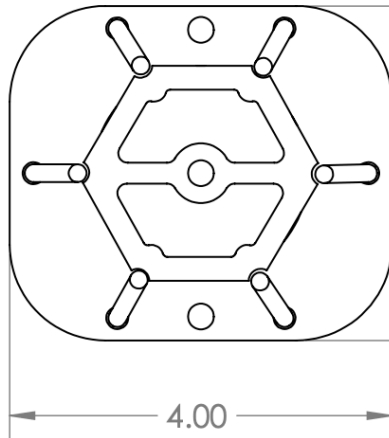
B

B



A

A

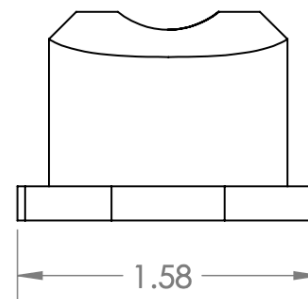
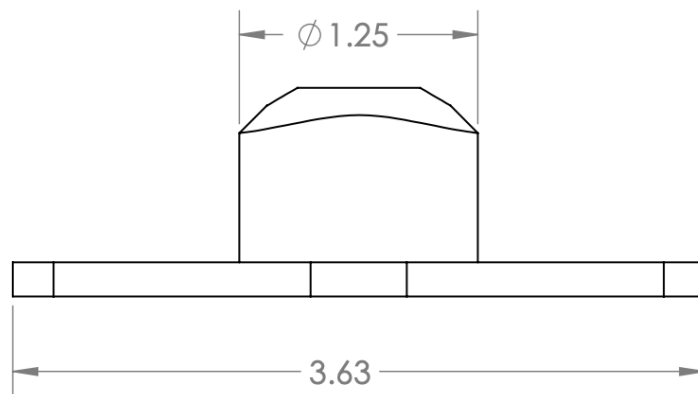
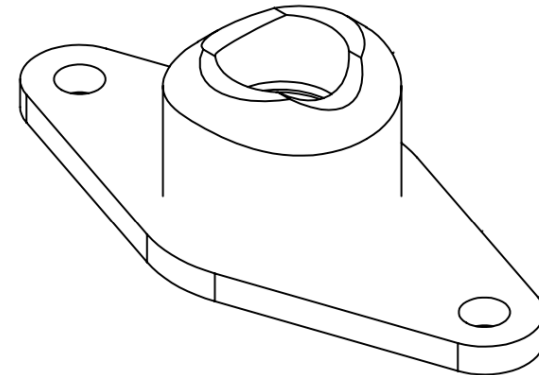
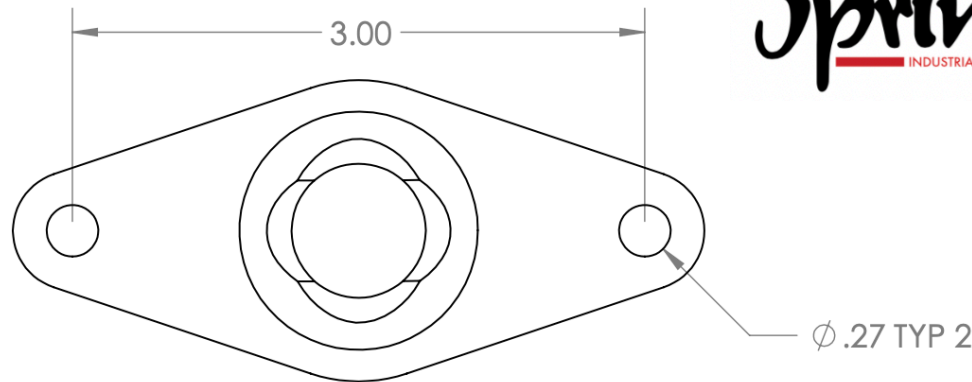


SG123 CAGE

The SG123 Cage is designed to be used on the ThreadGUARD and WeldGUARD base plates as well as the SG143 Adjustable Branch Line Guard.

2

1

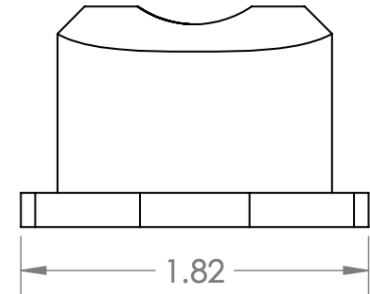
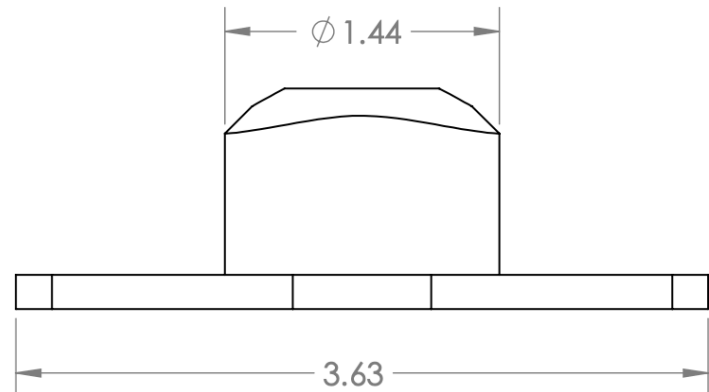
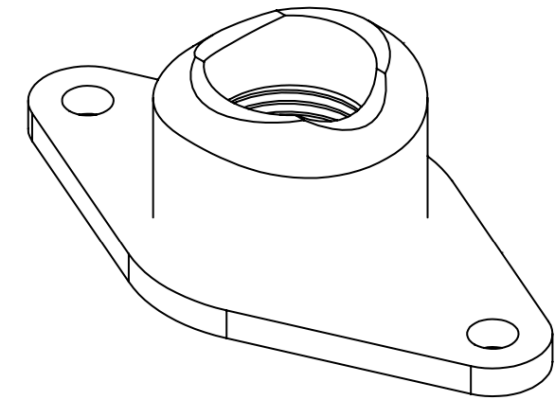
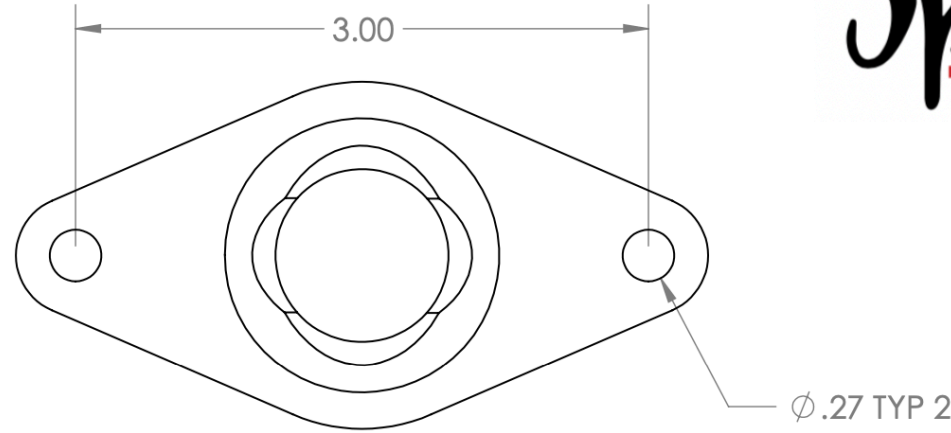


The WGB012 is used in conjunction with the SG123 Cage, and is designed for use with 3/4" fire sprinkler heads. The WGB012 is welded to the supply line during the fabrication process of fire sprinkler system. Once the system and sprinkler heads are installed, the SG123 cage is then bolted onto to the WGB012 WeldGUARD base. (Please refer to the SG123 data.)

WGB012 WeldGUARD BASEPLATE

2

1



The WGB034 is used in conjunction with the SG123 Cage, and is designed for use with 3/4" fire sprinkler heads. The WGB034 is welded to the supply line during the fabrication process of fire sprinkler system. Once the system and sprinkler heads are installed, the SG123 cage is then bolted onto to the WGB034 WeldGUARD base. (Please refer to the SG123 data sheet)

B

B

A

A

WGB034 WeldGUARD BASEPLATE

www.sprinkguard.com info@sprinkguard.com 877-274-7976

Copyright 2023

2

1